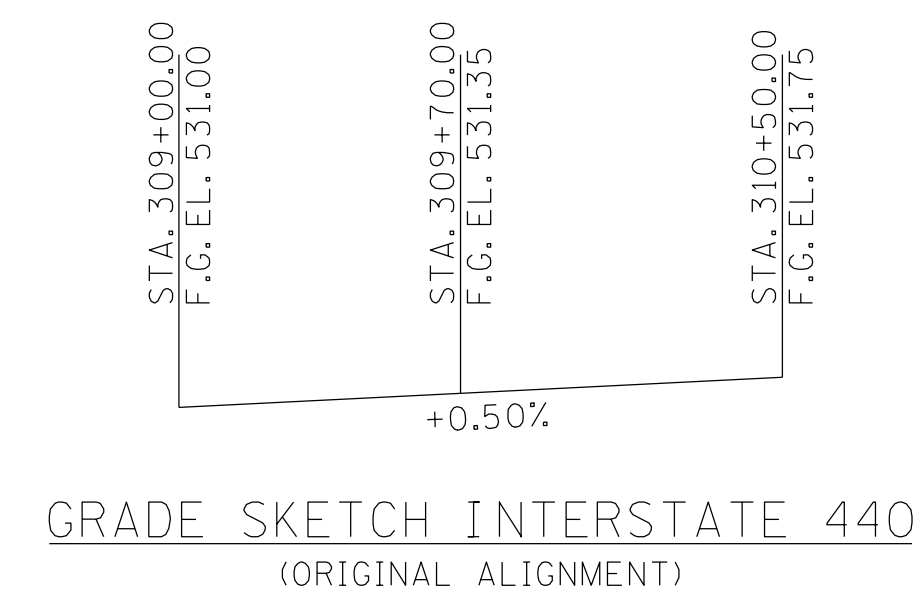
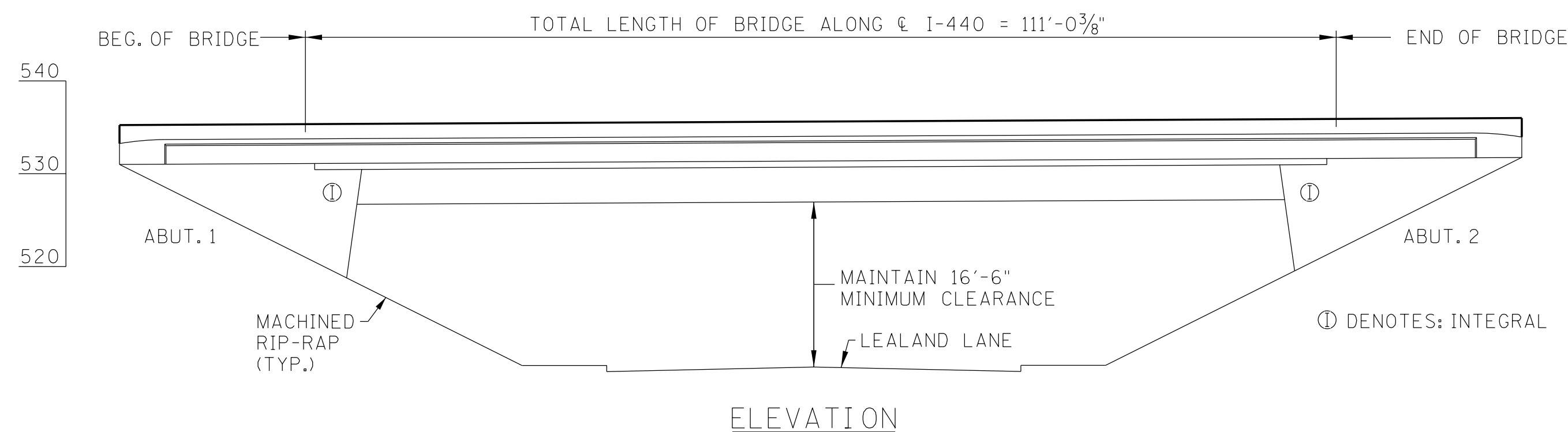


PROJECT NO.	YEAR	SHEET NO.	
-	2018		
REVISIONS			
NO.	DATE	BY	BRIEF DESCRIPTION



SCOPE OF WORK

1. WIDEN BRIDGES TO MATCH PROPOSED APPROACH ROADWAYS RESULTING IN A SINGLE BRIDGE.
2. MAINTAIN 16'-6" MINIMUM VERTICAL CLEARANCE.
3. PLACE 51" CONCRETE MEDIAN BARRIER (REFERENCE TDOT STANDARD DRAWING STD-1-3SS).
4. PERFORM DECK REPAIRS ON EXISTING BRIDGES (REFERENCE TDOT STANDARD DRAWING STD-1-5).
5. REPAIR DETERIORATED AREAS OF CONCRETE ON BEAMS AND SUBSTRUCTURES (REFERENCE TDOT BRIDGE INSPECTION REPORT).
6. REPLACE EXISTING (AND ADD TO WIDENED PORTION OF BRIDGES) CONCRETE PAVEMENT AT BRIDGE ENDS (REFERENCE TDOT STANDARD DRAWING STD-1-5).
7. APPLY A THIN, EPOXY OVERLAY TO BRIDGE DECK AND CONCRETE PAVEMENT AT BRIDGE ENDS.
8. APPLY TEXTURE COATING TO MEDIAN BARRIER AND TOP AND INSIDE FACE OF PARAPETS.
9. REPLACE EXISTING NOISE BARRIERS ON PARAPETS IN CONFORMANCE WITH NOISE WALL INSPECTION REPORT AND PRELIMINARY PLANS AS INCLUDED ON THE PROJECT WEBSITE AND WITH THE SPECIAL PROVISION 718NB ABSORPTIVE BARRIERS.

GENERAL NOTES

1. SPECIFICATIONS: STANDARD ROAD AND BRIDGE SPECIFICATIONS OF THE TENNESSEE DEPARTMENT OF TRANSPORTATION (JANUARY 1, 2015 EDITION).
2. CONSTRUCTION MATERIALS SHALL SATISFY REQUIREMENTS OF THE TDOT STANDARD SPECIFICATIONS AND BE FOUND ON THE TDOT QUALIFIED PRODUCTS LIST.
3. DESIGN SPECIFICATIONS: AASHTO LRFD, 8TH EDITION.
4. DESIGN LIVE LOAD (WIDENED PORTION): HL-93

LIST OF REFERENCE DRAWINGS

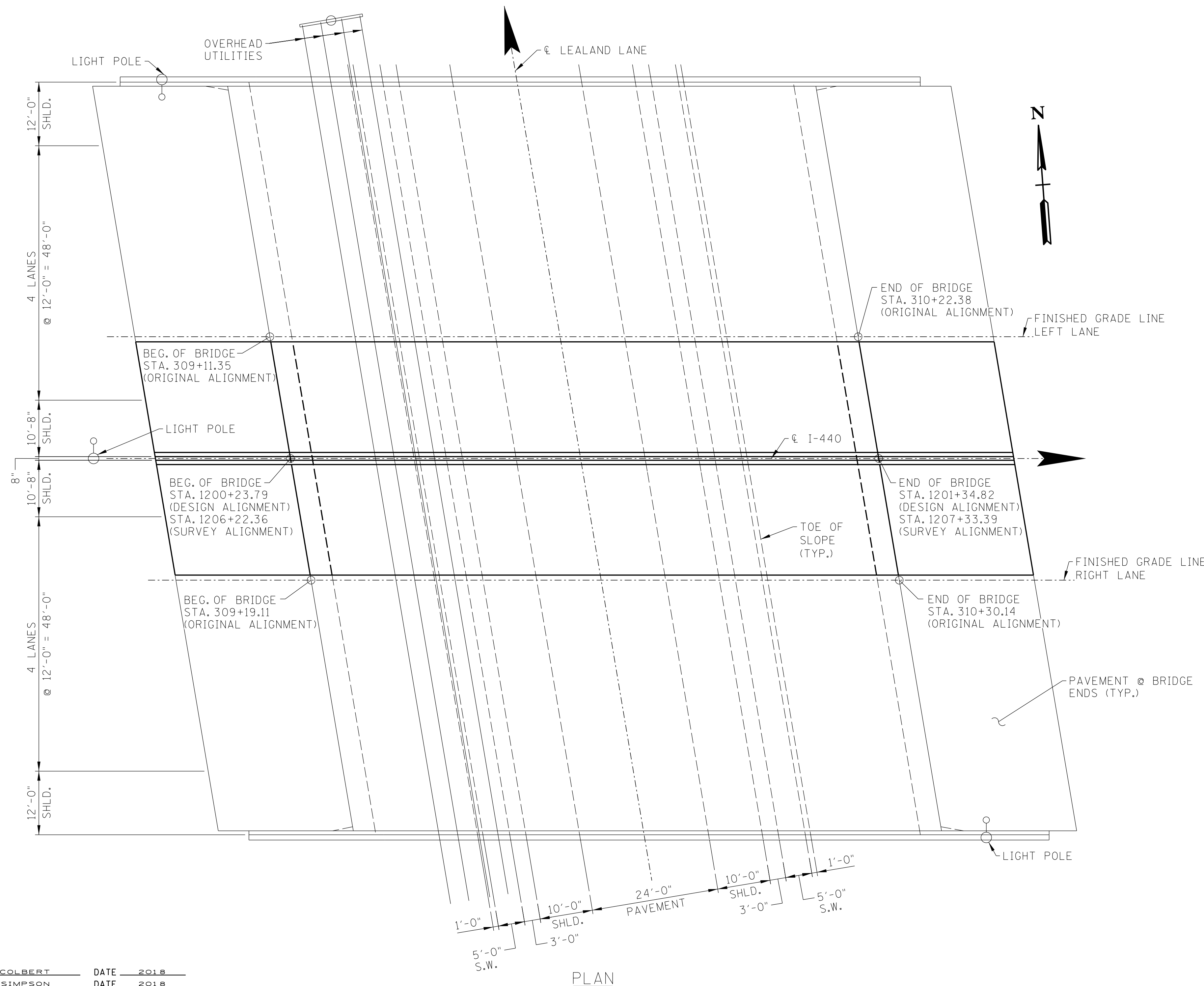
M-110-55 THRU M-110-64

ALL DIMENSIONS, ELEVATIONS, STATIONS, ϵ CURVE DATA ARE OBTAINED PER ORIGINAL PLANS DATED 1982 EXCEPT AS NOTED.

ADT (I-440) =
POSTED SPEED LIMIT (I-440) = 55 M.P.H.
POSTED SPEED LIMIT (LEALAND LN.) = 30 M.P.H.

STATE OF TENNESSEE
DEPARTMENT OF TRANSPORTATION

PRELIMINARY LAYOUT OF BRIDGE
INTERSTATE 440 OVER
LEALAND LANE
DAVIDSON COUNTY
2018

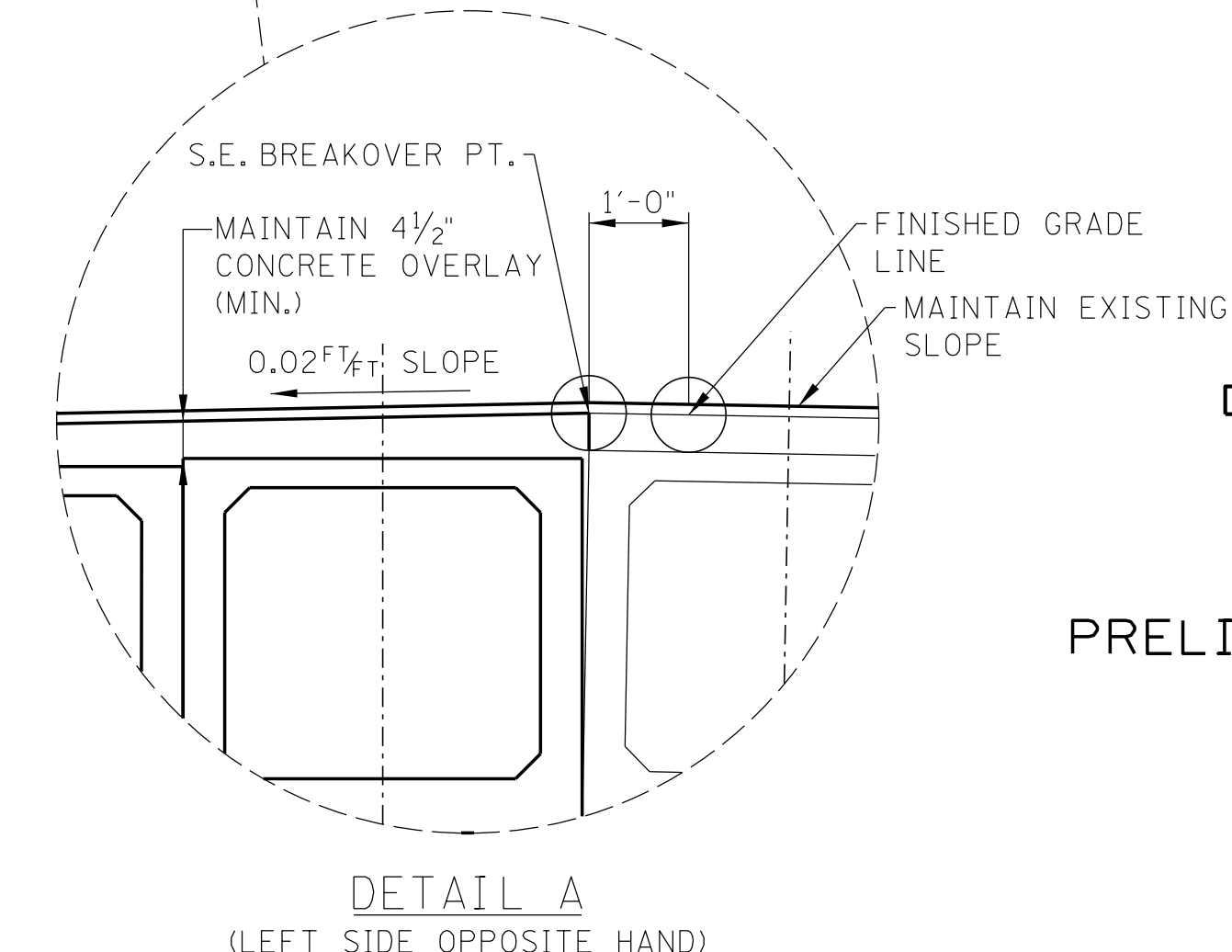
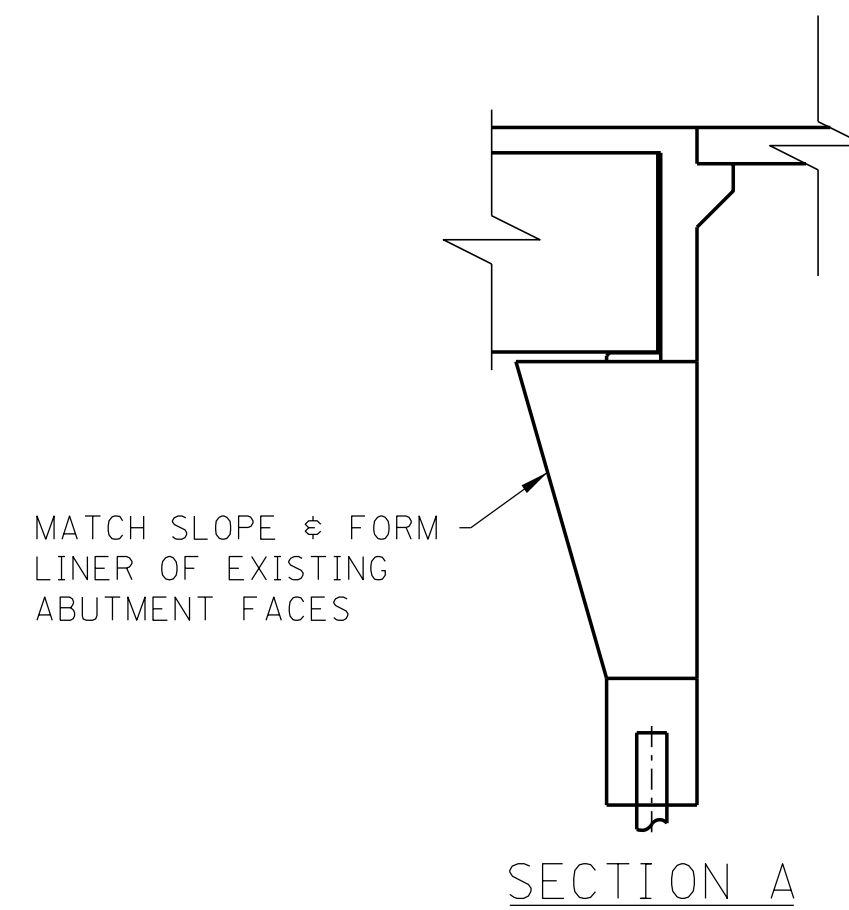
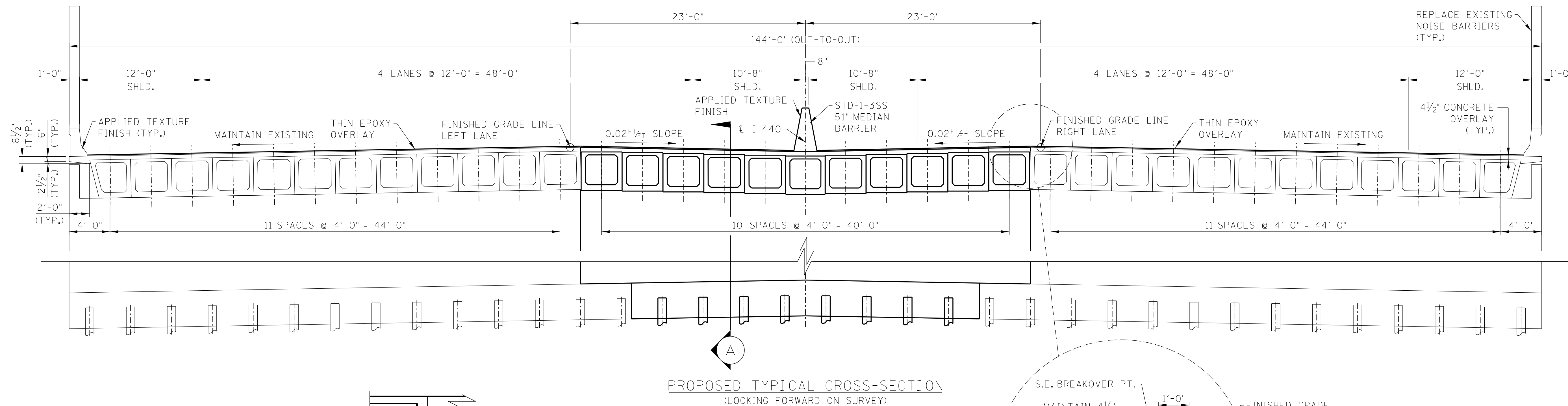
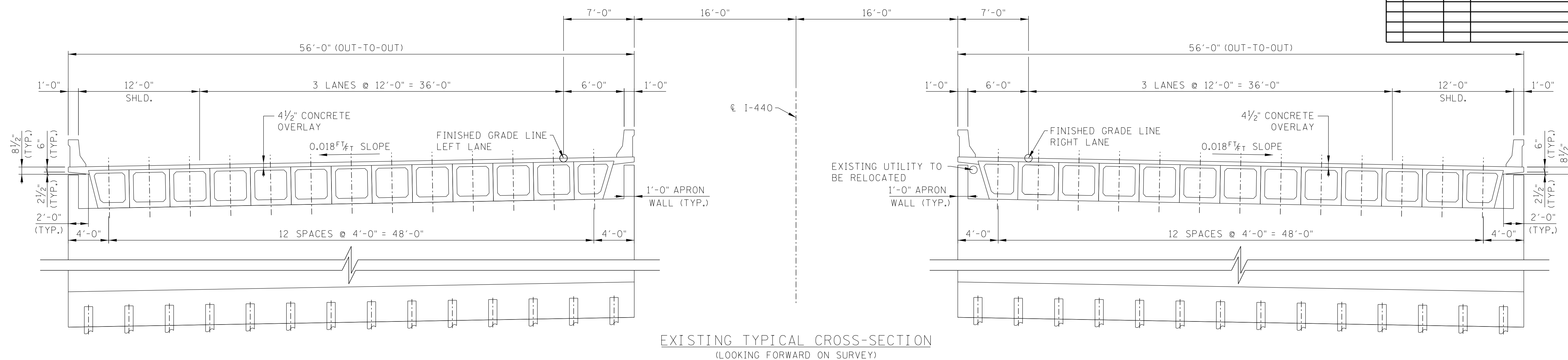


1/3/2018 12:57:56 PM

T:\TDOT\DAVIDSON I-440 DB\STRUCT\BRIDGE PLANS\Drawings\1443-00_LEALAND-LAY.DGN

DESIGNED BY	R.L. COLBERT	DATE	2018
DRAWN BY	M.D. SIMPSON	DATE	2018
SUPERVISED BY	G.S. WILSON	DATE	2018
CHECKED BY	G.S. WILSON	DATE	2018

PROJECT NO.	YEAR	SHEET NO.	
-	2018		
REVISIONS			
NO.	DATE	BY	BRIEF DESCRIPTION



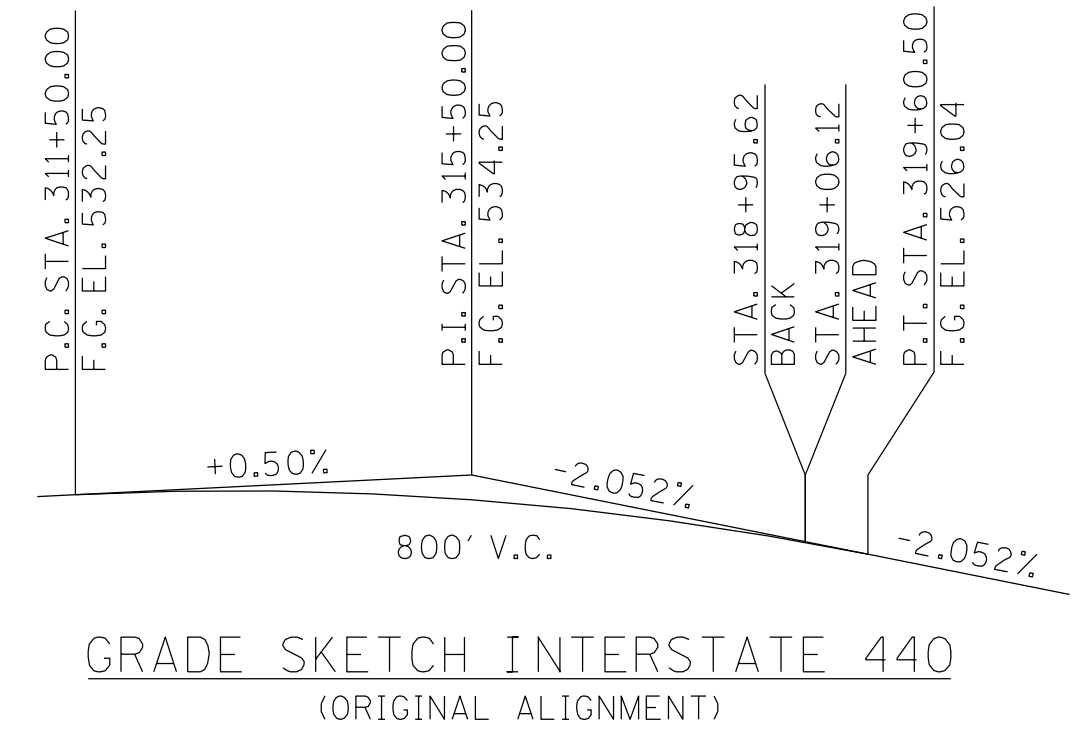
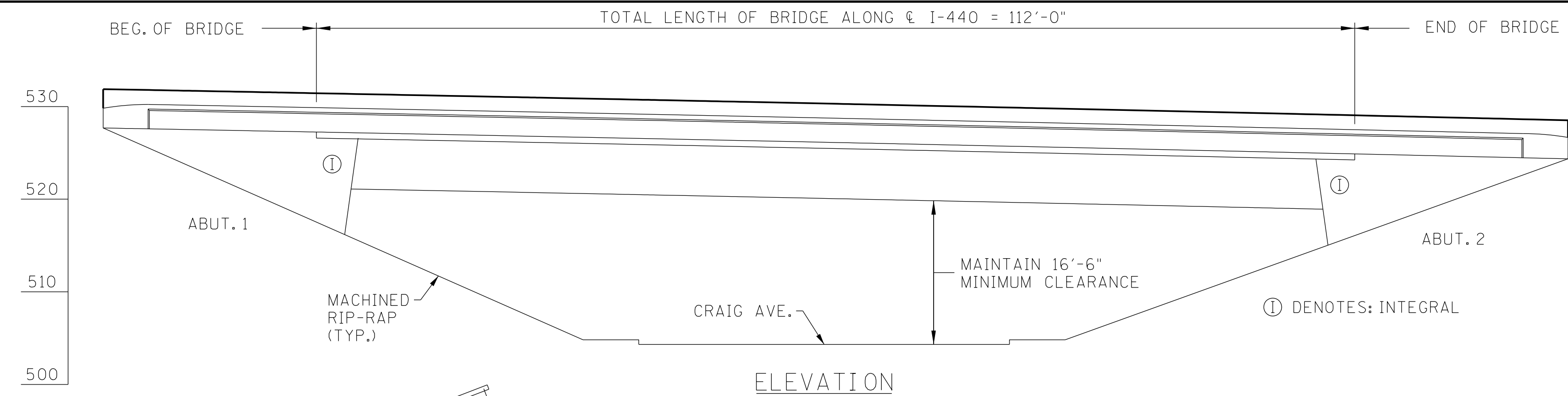
STATE OF TENNESSEE
DEPARTMENT OF TRANSPORTATION

PRELIMINARY LAYOUT OF BRIDGE
INTERSTATE 440 OVER
LEALAND LANE
DAVIDSON COUNTY
2018

T:\DOT\DAVIDSON I-440 BRIDGE\BRIDGE PLANS\DRAWINGS\1443-00-LEALAND-SECTION

1/3/2018 12:57:56 PM

DESIGNED BY	R.L. COLBERT	DATE	2018
DRAWN BY	M.D. SIMPSON	DATE	2018
SUPERVISED BY	G.S. WILSON	DATE	2018
CHECKED BY	G.S. WILSON	DATE	2018



PROJECT NO.	YEAR	SHEET NO.	
-	2018		
REVISIONS			
NO.	DATE	BY	BRIEF DESCRIPTION

SCOPE OF WORK

1. WIDEN BRIDGES TO MATCH PROPOSED APPROACH ROADWAYS RESULTING IN A SINGLE BRIDGE.
2. MAINTAIN 16'-6" MINIMUM VERTICAL CLEARANCE.
3. PLACE 5" CONCRETE MEDIAN BARRIER (REFERENCE TDOT STANDARD DRAWING STD-1-3SS).
4. PERFORM DECK REPAIRS ON EXISTING BRIDGES (REFERENCE TDOT STANDARD DRAWING STD-1-5).
5. REPAIR DETERIORATED AREAS OF CONCRETE ON BEAMS AND SUBSTRUCTURES (REFERENCE TDOT BRIDGE INSPECTION REPORT).
6. REPLACE EXISTING (AND ADD TO WIDENED PORTION OF BRIDGES) CONCRETE PAVEMENT AT BRIDGE ENDS (REFERENCE TDOT STANDARD DRAWING STD-1-5).
7. APPLY A THIN, EPOXY OVERLAY TO BRIDGE DECK AND CONCRETE PAVEMENT AT BRIDGE ENDS.
8. APPLY TEXTURE COATING TO MEDIAN BARRIER AND TOP AND INSIDE FACE OF PARAPETS.

GENERAL NOTES

1. SPECIFICATIONS: STANDARD ROAD AND BRIDGE SPECIFICATIONS OF THE TENNESSEE DEPARTMENT OF TRANSPORTATION (JANUARY 1, 2015 EDITION).
2. CONSTRUCTION MATERIALS SHALL SATISFY REQUIREMENTS OF THE TDOT STANDARD SPECIFICATIONS AND BE FOUND ON THE TDOT QUALIFIED PRODUCTS LIST.
3. DESIGN SPECIFICATIONS: AASHTO LRFD, 8TH EDITION.
4. DESIGN LIVE LOAD (WIDENED PORTION): HL-93

LIST OF REFERENCE DRAWINGS

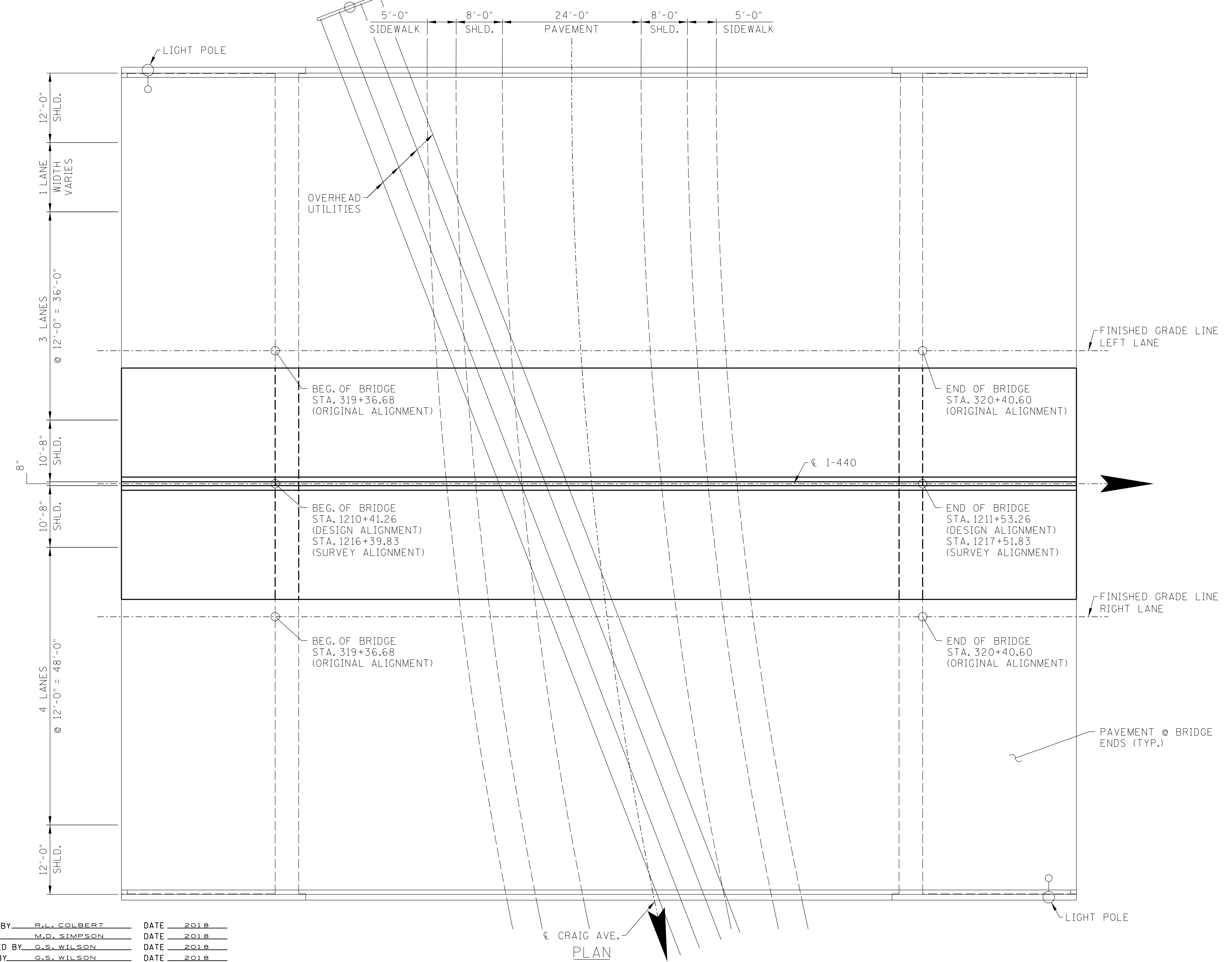
M-110-65 THRU M-110-74

ALL DIMENSIONS, ELEVATIONS, STATIONS, ϵ CURVE DATA ARE OBTAINED PER ORIGINAL PLANS DATED 1982 EXCEPT AS NOTED.

ADT (I-440) =
POSTED SPEED LIMIT (I-440) = 55 M.P.H.
POSTED SPEED LIMIT (CRAIG AVE.) = 35 M.P.H.

STATE OF TENNESSEE
DEPARTMENT OF TRANSPORTATION

PRELIMINARY LAYOUT OF BRIDGE
INTERSTATE 440 OVER
CRAIG AVENUE
DAVIDSON COUNTY
2018

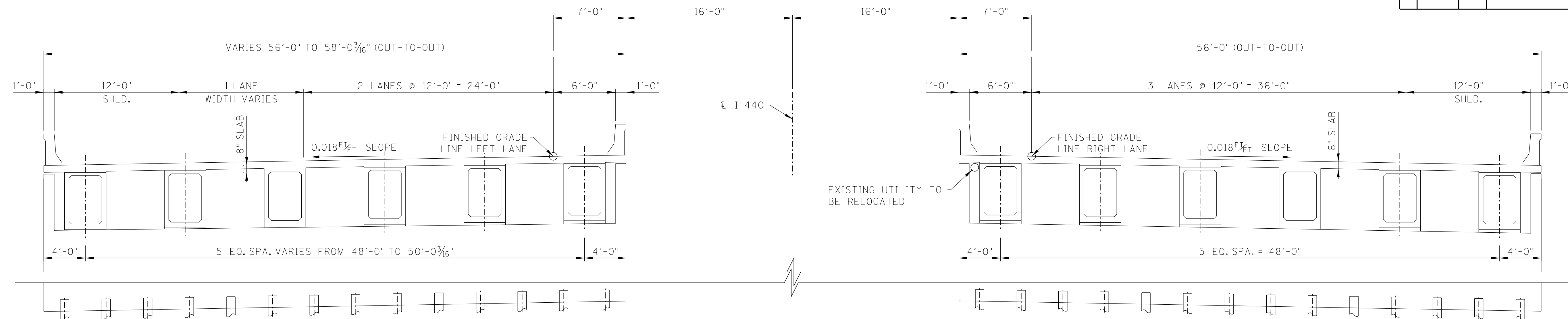


1/3/2018 12:57:55 PM

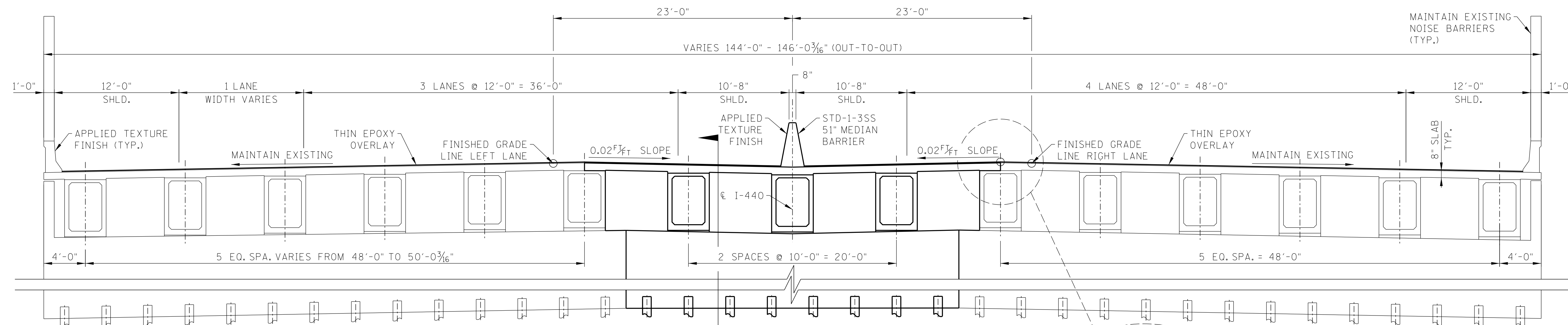
T:\DOT\DAVIDSON I-440 DE\STRUCT\BRIDGE PLANS\Drawings\1443-00_Craig-Lay.dgn

DESIGNED BY	R.L. COLBERT	DATE	2018
DRAWN BY	M.D. SIMPSON	DATE	2018
SUPERVISED BY	G.S. WILSON	DATE	2018
CHECKED BY	G.S. WILSON	DATE	2018

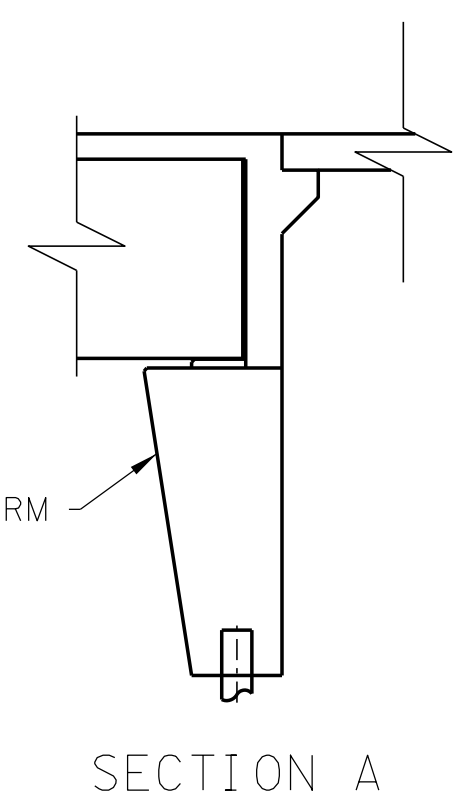
PROJECT NO.	YEAR	SHEET NO.	
-	2018		
REVISIONS			
NO.	DATE	BY	BRIEF DESCRIPTION



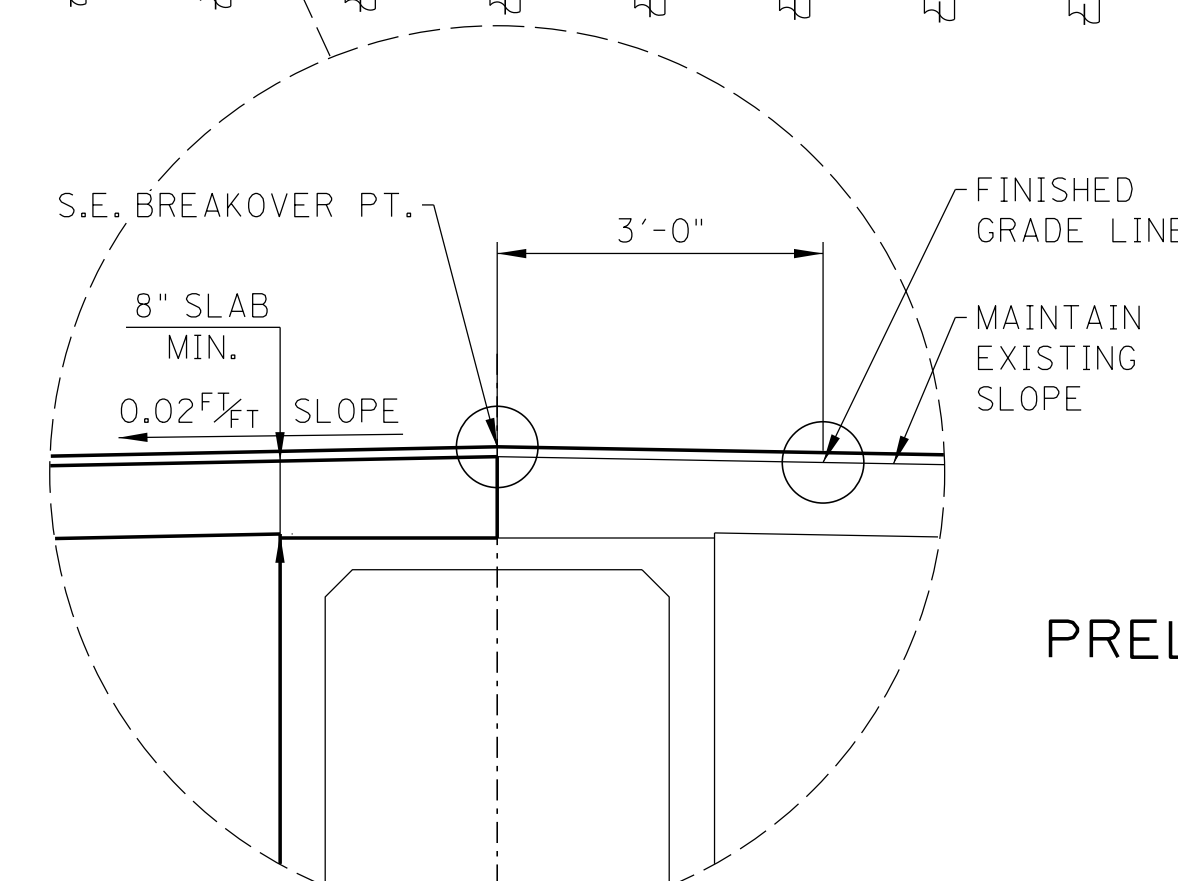
EXISTING TYPICAL CROSS-SECTION
(LOOKING FORWARD ON SURVEY)



PROPOSED TYPICAL CROSS-SECTION
(LOOKING FORWARD ON SURVEY)



SECTION A



DETAIL A
(LEFT SIDE OPPOSITE HAND)

STATE OF TENNESSEE
DEPARTMENT OF TRANSPORTATION

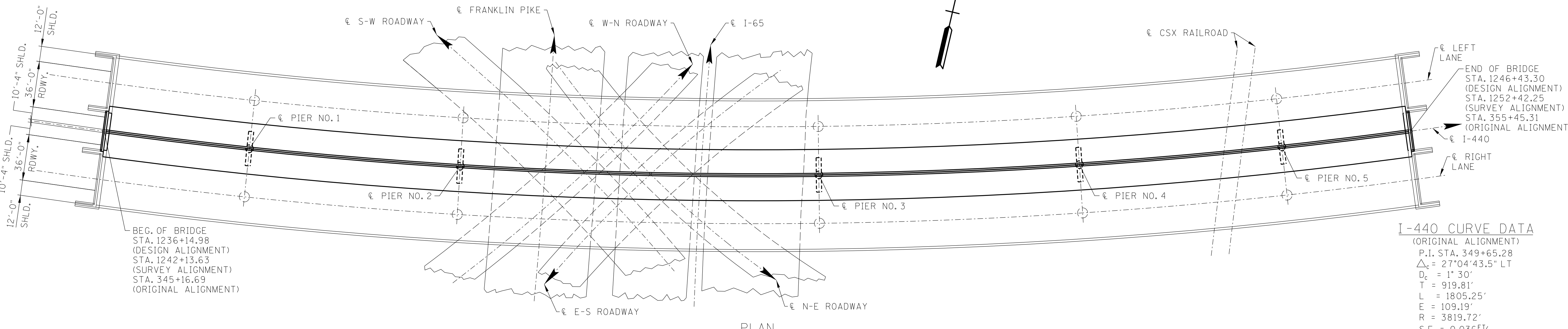
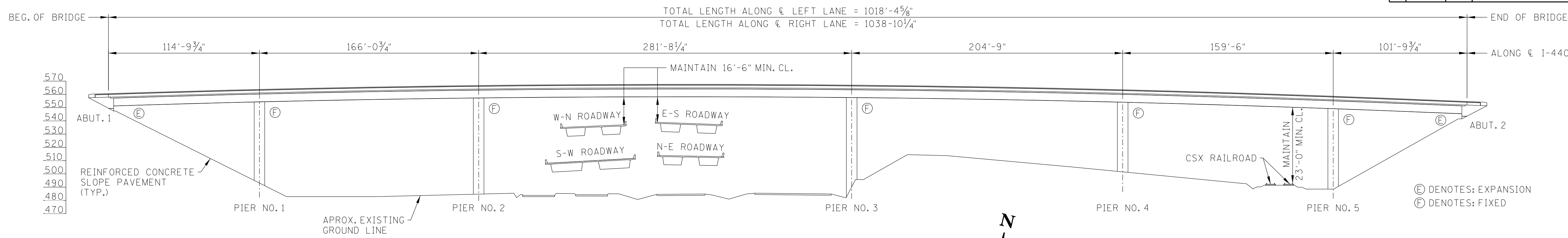
PRELIMINARY LAYOUT OF BRIDGE
INTERSTATE 440 OVER
CRAIG AVENUE
DAVIDSON COUNTY
2018

1/3/2018 12:57:55 PM

T:\DOT\DAVIDSON I-440 BRIDGE\STRUCT\BRIDGE PLANS\DRAWINGS\1443-00_CRAIG_SECTION

DESIGNED BY R.L. COLBERT DATE 2018
DRAWN BY M.D. SIMPSON DATE 2018
SUPERVISED BY G.S. WILSON DATE 2018
CHECKED BY G.S. WILSON DATE 2018

PROJECT NO.	YEAR	SHEET NO.	
-	2018		
REVISIONS			
NO.	DATE	BY	BRIEF DESCRIPTION



I-440 CURVE DATA
(ORIGINAL ALIGNMENT)

P.I. STA.	1246+43.30
(DESIGN ALIGNMENT)	STA. 1252+42.25
(SURVEY ALIGNMENT)	STA. 355+45.31
(ORIGINAL ALIGNMENT)	
€ LEFT LANE	
€ I-440	
€ RIGHT LANE	
€ PIER NO. 5	

Δ_c	= 27°04'43.5" LT
D_c	= 1° 30'
T	= 919.81'
L	= 1805.25'
E	= 109.19'
R	= 3819.72'
S.E.	= 0.036 ^{ft} / _{ft}
C.C. N	= 632161.47'
E	= 1770741.96'
P.C. STA.	340+45.47'
N	= 628343.20'
E	= 1770636.96'

SCOPE OF WORK

1. WIDEN BRIDGES TO MATCH PROPOSED APPROACH ROADWAYS UTILIZING STRUCTURAL STEEL ELEMENTS.
2. MAINTAIN 16'-6" MINIMUM VERTICAL CLEARANCE.
3. PLACE CONCRETE PARAPETS ON WIDENED PORTIONS OF THE BRIDGES (REFERENCE TDOT STANDARD DRAWING STD-1-1SS).
4. REPLACE EXISTING (AND ADD TO WIDENED PORTION OF BRIDGES) CONCRETE PAVEMENT AT BRIDGE ENDS (REFERENCE TDOT STANDARD DRAWING STD-1-5).
5. EXTEND IN KIND OR REPLACE MODULAR EXPANSION JOINTS AT ABUTMENTS.
6. APPLY A THIN, EPOXY OVERLAY TO BRIDGE DECK AND CONCRETE PAVEMENT AT BRIDGE ENDS.
7. TEXTURE COAT INTERIOR PARAPETS.

GENERAL NOTES

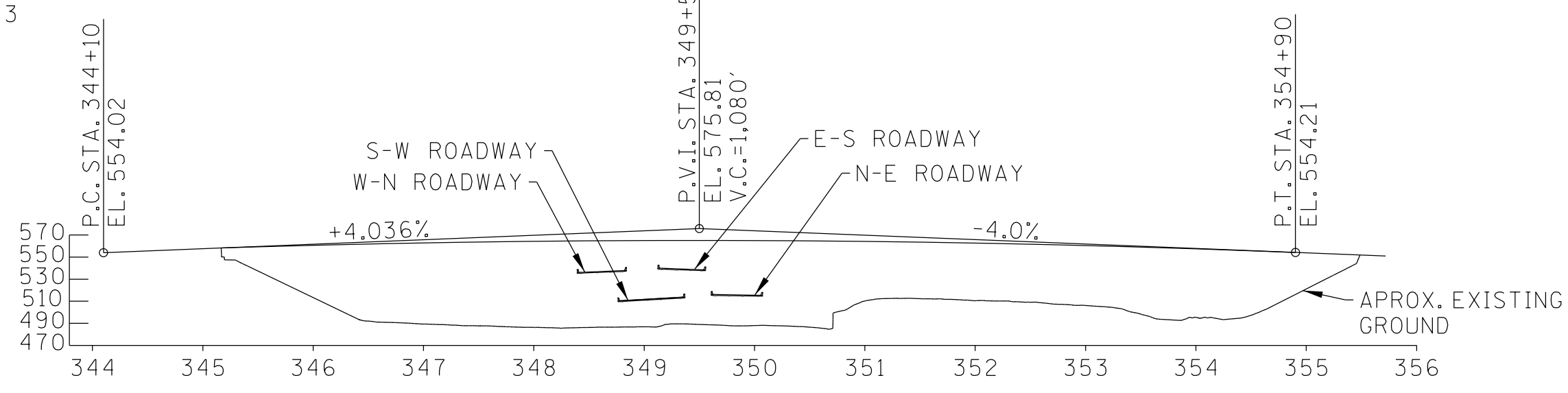
1. SPECIFICATIONS: STANDARD ROAD AND BRIDGE SPECIFICATIONS OF THE TENNESSEE DEPARTMENT OF TRANSPORTATION (JANUARY 1, 2015 EDITION).
2. CONSTRUCTION MATERIALS SHALL SATISFY REQUIREMENTS OF THE TDOT STANDARD SPECIFICATIONS AND BE FOUND ON THE TDOT QUALIFIED PRODUCTS LIST.
3. DESIGN SPECIFICATIONS: AASHTO LRFD, 8TH EDITION.
4. DESIGN LIVE LOAD (WIDENED PORTION): HL-93

LIST OF REFERENCE DRAWINGS

M-15-55 THRU M-15-58
M-15-98 THRU M-15-118
BR-117-68, BR-117-91 THRU BR-117-101
BR-33-79 THRU BR-33-87

ALL DIMENSIONS, ELEVATIONS, STATIONS, & CURVE DATA ARE OBTAINED PER ORIGINAL PLANS DATED 1982 EXCEPT AS NOTED.

ADT (I-440) =
POSTED SPEED LIMIT (I-440) = 55 M.P.H.
POSTED SPEED LIMIT (I-65) = 65 M.P.H.



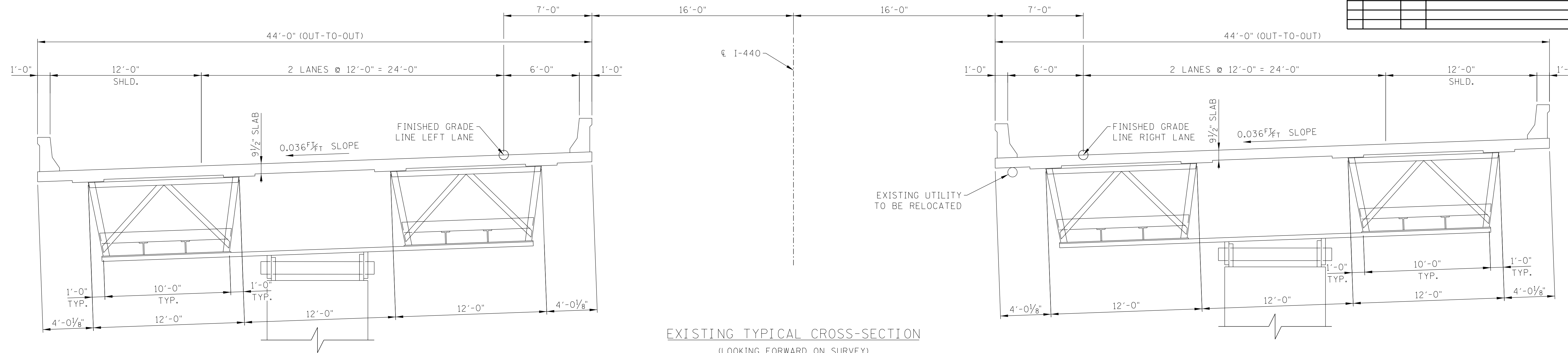
STATE OF TENNESSEE
DEPARTMENT OF TRANSPORTATION

**PRELIMINARY LAYOUT OF BRIDGE
INTERSTATE 440 OVER
I-65 DIRECTIONAL INTERCHANGE
DAVIDSON COUNTY
2018**

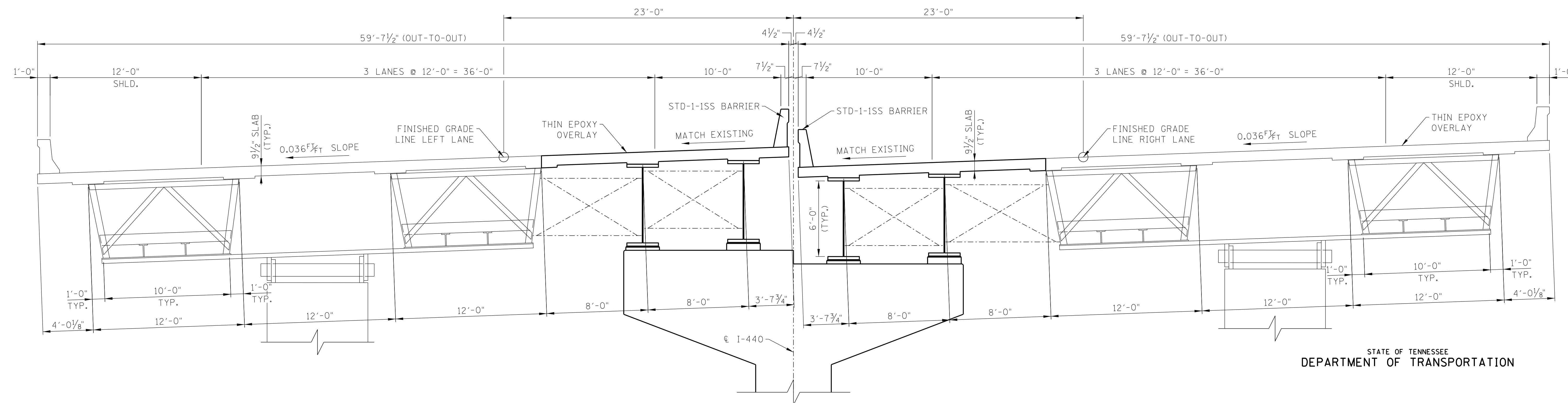
T:\DOT\DAVIDSON I-440 DB\STRUCT\BRIDGE PLANS\DRAWINGS\1443-00-1-65-LAY.DGN 1/3/2018 12:57:56 PM

DESIGNED BY	H.H. NEAL	DATE	2018
DRAWN BY	M.D. SIMPSON	DATE	2018
SUPERVISED BY	G.S. WILSON	DATE	2018
CHECKED BY	G.S. WILSON	DATE	2018

PROJECT NO.	YEAR	SHEET NO.	
-	2018		
REVISIONS			
NO.	DATE	BY	BRIEF DESCRIPTION



EXISTING TYPICAL CROSS-SECTION
(LOOKING FORWARD ON SURVEY)



PROPOSED TYPICAL CROSS-SECTION
(LOOKING FORWARD ON SURVEY)

STATE OF TENNESSEE
DEPARTMENT OF TRANSPORTATION

PRELIMINARY LAYOUT OF BRIDGE
INTERSTATE 440 OVER
I-65 DIRECTIONAL INTERCHANGE
DAVIDSON COUNTY
2018

T:\DOT\DAVIDSON I-440 DB\STRUCT\BRIDGE PLANS\DRAWINGS\1443-00-1-65-SEC.DWG 1/3/2018 12:57:56 PM

DESIGNED BY H.H. NEAL DATE 2018
DRAWN BY M.D. SIMPSON DATE 2018
SUPERVISED BY G.S. WILSON DATE 2018
CHECKED BY G.S. WILSON DATE 2018